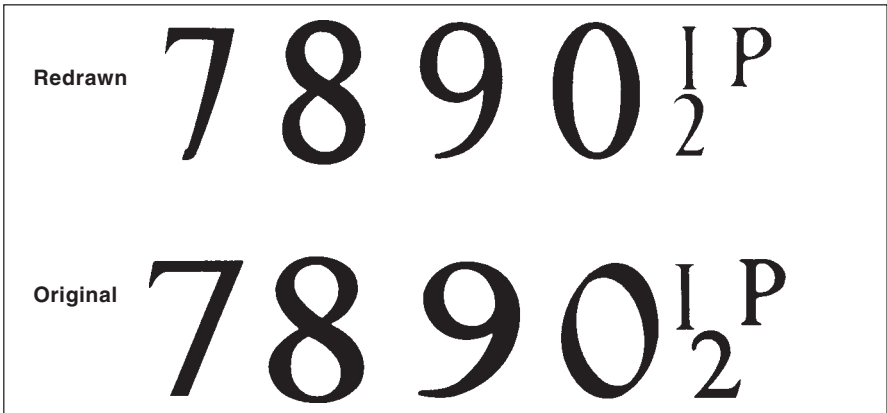
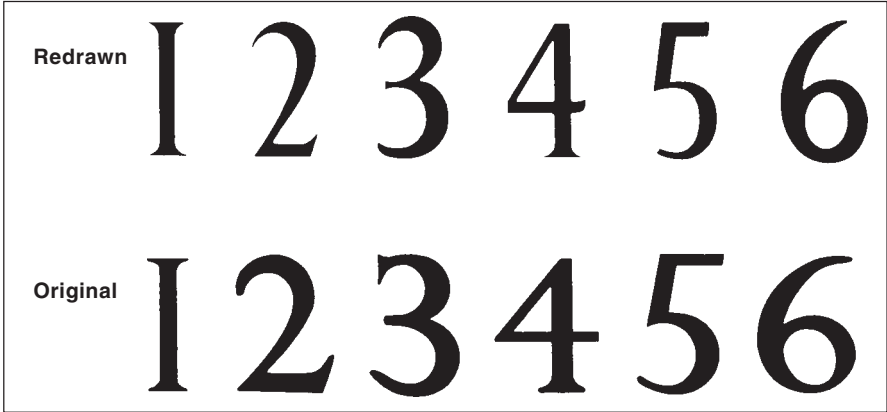


SECTION 3

Decimal Stamps with Redrawn Numerals



For some time both Post Office and printers were aware that the value tablet had lost its uniformity both in design and position; whilst giving great pleasure to philatelists, enabling them to place and identify printings by value, type and position, it did not correspond to the Post Office's ideas of quality control. At a P.O. meeting early in 1982, it was felt that the previous arrangement of leaving it to the printing technicians to select the particular value tablet required, and even leaving to the same technicians the actual positioning of the value, had resulted in an unacceptable hotchpotch. Added to this were the problems that arose from the ever-increasing size of the denominations, both physical and numerical.

When inflation called for such values as the 20½p, a narrower set of numerals with less spread was required and Jeffery Matthews, the artist often used by the British Post Office, was employed to design the completely new set of denominations. Each value is designed as a whole in the sleeker and more modern style now in use: for ease of reference we illustrate the numerals separately. Matthews also positions the values on a grid based on the bottom corner of the stamp design, so that in theory different settings should no longer occur.

Redrawn numerals first appeared in the issues of 30 March 1983; phasing out the old style was progressively completed by 1988.

Along with redesigned numerals the Post Office have been systematically improving other aspects of design. In 1988 they began switching to the stronger “Jeffery Matthews” colours, for which he has designed a total of 30. In using them the P.O. have progressively phased out light and graded backgrounds, current style being light heads on dark backgrounds. First seen with the Harrison 5p of 26 July 1988, the change-over was completed with the issue of the 10p orange of 4 September 1990.

Screening dots over the value tablet reappeared in 1986 with the sheet stamps 12p FCP (CC RF120) and 34p ACP (CC RA340). From mid-1987 other values have been found with screened values and these are listed with suffix SCR.

Harrison printings. Photo. Perf 15 x 14.

Sources: See Chapter 2, heading to listing.

<i>CC</i>	<i>Value</i>	<i>Phos. Bands</i>	<i>First Issued</i>	<i>Source</i>	<i>Price</i>
(a) FCP/DEX					
All 150 phosphor screen except where stated. (S) codes indicate short bands.					
RF10	1p	Crimson, 4mm phos RF10AB RF10NP	CB Additional narrow short bands at top Missing phosphor	3.9.84 50p panes DP70/A pane DP70 pane DP70	0.50 7.50 50.00
RF11	1p	Crimson, 4.5mm phos	CB	29.7.86 20.10.86	50p pane DP90 50p pane DP94
RF12	1p	Crimson RF12BB RF12NP	SBL Broad band at left Missing phosphor	20.10.86	50p pane DP93 pane DP93 pane DP93
RF13	1p	Crimson	SBR	20.10.86	50p ERROR pane DP93A
RF35	3½p	Purple-brown RF35NP	CB Missing phosphor	5.4.83	50p panes DP60/M pane DP60
RF36	3½p	Pale purple-brown, weak background	CB	4.83	50p panes DP60
RF40	4p	Pale greenish blue RF40NP	CB Missing phosphor	3.9.84	50p panes DP70/A pane DP70
RF41	4p	Greenish blue RF41BB RF41FB RF41NP	SBL One broad band at left Bands front & back Missing phosphor	8.1.85	Times pane DP79 pane DP79 pane DP79 pane DP79

<i>CC</i>	<i>Value</i>		<i>Phos. Bands</i>	<i>First Issued</i>	<i>Source</i>	<i>Price</i>
RF42	4p	Greenish blue RF42FB	SBR Bands front & back	8.1.85	Times pane DP79 pane DP79	1.50 375.00
RF43	4p	Pale milky blue	CB	23.7.85	50p pane DP70	8.50
RF50	5p	Claret	CB	20.10.86	50p pane DP94	1.75
RF100	10p	Light orange RF100FB RF100NP	2B Bands front & back Missing phosphor	4.9.84	Heritage pane DP74 pane DP74 pane DP74	10.00 850.00 £1500
RF101	10p	Light orange, translucent paper	2B	4.9.84	Heritage Pane DP74	30.00
RF120	12p	Emerald, 4mm phos RF120IMP RF120NP	CB Imperforate Missing phosphor	29.10.85 12.11.85 14.1.86 23.9.86	cyls 9, 10, 11, 12, 13 vert coil C28A £1.20 panes DP84, 84A/C horiz coil C28B cyl – (hor pair) cyl 9; DP84	0.50 £1000 7.00
RF120SCR	12p	Emerald, screened value	CB	2.86	cyl 11	3.00
RF120A	12p	Emerald, 4.5mm phos RF120A/BR RF120A/NP	CB One band right (displaced) Missing phosphor	18.3.86 29.7.86	Brit Rail pane DP87 50p pane DP90 pane DP87 pane DP87	2.00 40.00 25.00
RF120B	12p	Emerald, flooded value 4mm phos	CB	11.85	cyls 9	10.00
RF121	12p	Emerald, star underprint Type 2M RF121BR	CB One band right (displaced)	29.10.85	cyls 9, 10 cyl 9	0.50 5.50
RF121SCR	12p	Emerald, star underprint Type 2M, screened value	CB	12.85	cyl 10	5.00
RF122	12p	Emerald RF122BB RF122FB RF122NP	SBL One broad band at left Bands front & back Missing phosphor	14.1.86 18.3.86	£1.50 panes DP85/A Brit Rail pane DP88 pane DP88 pane DP88 pane DP88	0.75 175.00 350.00 65.00
RF123	12p	Emerald RF123FB	SBR Bands front & back	14.1.86 18.3.86	£1.50 panes DP85/A Brit Rail pane DP88 pane DP88	0.75 350.00
RF130	13p	Chestnut RF130AOP RF130BR RF130HB RF130IMP RF130NP	CB Phosphor wash One band right (displaced) Additional horizontal phosphor band Imperforate Missing phosphor	28.8.84 3.9.84 3.9.84 3.9.84 20.10.86 21.10.86	cyls 7, 14 vert coil C30 50p panes DP70/A £1.30 panes DP68/A 50p pane DP94 horiz coil C30A pane DP68 horiz coil C30A pane DP68, sheets cyl – (horiz pair) panes DP68/A, 70	0.60 12.00 5.00 8.50 950.00 5.00

3 : Redrawn Numerals FCP/DEX

<i>CC</i>	<i>Value</i>		<i>Phos. Bands</i>	<i>First Issued</i>	<i>Source</i>	<i>Price</i>
RF131	13p	Chestnut	CB5	8.1.85	Times pane DP78	0.60
		RF131FB	Bands front & back		pane DP78	90.00
		RF131NP	Missing phosphor		pane DP78	70.00
RF131A	13p	Chestnut, star underprint Type 2	CB	2.12.86	£1.20 Xmas panes DP68D/E	0.60
		RF131A/NP	Missing phosphor		pane DP68D	£1250
RF132	13p	Chestnut	SBL	3.9.84	£1.54 panes DP71/A	0.65
				4.9.84	Heritage panes DP73, 74, 75	
				8.1.85	Times pane DP79	
				20.10.86	50p ERROR pane DP93A	
				20.10.86	£1 pane DP95	
		RF132BB	One broad band at centre (L.£95, R.£125)		panes DP75, 79	85.00
		RF132FB RF132NP	Bands front & back Missing phosphor		panes DP74, 75, 79 panes DP73,74,75,79	125.00 40.00
RF132A	13p	Chestnut, translucent paper	SBL	4.9.84	Heritage panes DP73, 74	27.50
RF133	13p	Chestnut	SBR	3.9.84	£1.54 panes DP71/A	0.65
				4.9.84	Heritage panes DP73, 75	
				8.1.85	Times pane DP79	
				20.10.86	50p pane DP93	
		RF133FB RF133NP	Bands front & back Missing phosphor		pane DP73, 75, 79 pane DP93	125.00 35.00
RF133A	13p	Chestnut, translucent paper	SBR	4.9.84	Heritage pane DP73	40.00
RF134	13p	Chestnut			£1.54 ERROR panes DP71D/E:	
			2B (S14)	3.9.84	panes DP71D/E	6.00
			2B (S15)	3.9.84	panes DP71D/E	6.00
RF170	17p	Grey-blue	2B	3.9.84	£1.54 panes DP71A, 71D/E:	0.70
				4.9.84	Heritage pane DP74	
				8.1.85	Times pane DP79	
				14.1.86	£1.50 panes DP85/A	
				18.3.86	Brit Rail pane DP88	
				3.9.84	£1.54 panes DP71A	3.00
				14.1.86	£1.50 panes DP85/A	
				3.9.84	£1.54 panes DP71A	3.00
				14.1.86	£1.50 panes DP85/A	
				4.9.84	Heritage pane DP74	2.50
				14.1.86	£1.50 panes DP85/A	
				4.9.84	Heritage pane DP74	2.50
				14.1.86	£1.50 panes DP85/A	
				3.9.84	£1.54 panes DP71/A	2.50
				14.1.86	£1.50 panes DP85/A	
3.9.84	£1.54 panes DP71/A	2.50				
14.1.86	£1.50 panes DP85/A					
RF170BB	One broad band at left		panes DP79, 88	275.00		
RF170FB	Bands front & back		panes DP74, 79, 88	175.00		
RF170(S12)FB	Bands front & back		pane DP74	400.00		
RF170(S13)FB	Bands front & back		pane DP74	400.00		
RF170NP	Missing phosphor		panes DP74, 79, 88	275.00		

<i>CC</i>	<i>Value</i>	<i>Phos. Bands</i>	<i>First Issued</i>	<i>Source</i>	<i>Price</i>		
RF170A	17p	Grey-blue, bands 250 scr	2B	12.8.86	50p pane DP82A	1.00	
			2B (S16)	12.8.86	50p pane DP82A	4.50	
			2B (I1)	12.8.86	50p pane DP82A	7.50	
RF170B	13p	Grey-blue, translucent paper	2B	4.9.84	Heritage pane DP74	10.00	
			2B (S12)	4.9.84	Heritage pane DP74	40.00	
			2B (S13)	4.9.84	Heritage pane DP74	40.00	
RF171	17p	Grey-blue	SBL	3.9.84	£1.54 ERROR panes DP71D/E	11.00	
RF172	17p	Grey-blue	SBR	3.9.84	£1.54 ERROR panes DP71D/E	11.00	
RF173	17p	Grey-blue, star underprint Type 2M	2B	4.11.85	50p pane DP82	0.70	
			2B (S16)	4.11.85	50p pane DP82	7.50	
			2B (N1)	4.11.85	50p pane DP82	6.00	
			2B (I1)	4.11.85	50p pane DP82	6.00	
			2B (I2)	4.11.85	50p pane DP82	17.50	
		RF173BU	Phos displaced up (S17)		pane DP82	10.00	
		RF173MLBa	Left band omitted		pane DP82	90.00	
		RF173MLBb	Short left band omitted		pane DP82	100.00	
		RF173MRBa	Right band omitted		pane DP82	90.00	
		RF173MRBb	Short right band omitted		pane DP82	100.00	
RF173NP	Missing phosphor		pane DP82	10.00			
RF180	18p	Grey-green	2B	20.10.86	£1 pane DP95	2.00	
			2B (S10)	20.10.86	50p panes DP93/A	8.00	
			2B (S12)	20.10.86	50p panes DP93/A,		
					£1 pane DP95	4.50	
			2B (N1)	20.10.86	£1 pane DP95	15.00	
		RF180BB	Broad band at left		pane DP93	250.00	
RF180NP	Missing phosphor		pane DP93	25.00			
RF180SCR	18p	Grey-green, screened value	2B	20.10.86	£1 pane DP95	15.00	
			2B (S10)	20.10.86	50p panes DP93/A	30.00	
			2B (S12)	20.10.86	panes DP93/A, 95	30.00	
			2B (N1)	20.10.86	pane DP95	35.00	
RF181	18p	Grey-green, inset band	2B (I1)	20.10.86	£1 pane DP95	5.00	
RF181SCR	18p	Grey-green, screened value, inset band	2B (I1)	20.10.86	£1 pane DP95	35.00	
RF310	31p	Purple	2B	18.3.86	Brit Rail pane DP88	6.25	
			RF310BB	One broad band at left		pane DP88	£1000
			RF310FB	Bands front & back		pane DP88	800.00
			RF310NP	Missing phosphor		pane DP88	850.00
RF340	34p	Olive-sepia	2B	8.1.85	Times pane DP79	5.50	
			RF340BB	One broad band at left		pane DP79	£1000
			RF340FB	Bands front & back		pane DP79	£1000
			RF340NP	Missing phosphor		pane DP79	950.00

3 : Redrawn Numerals FCP/DEX A-phosphor

<i>CC</i>	<i>Value</i>	<i>Phos. Bands</i>	<i>First Issued</i>	<i>Source</i>	<i>Price</i>	
(b) FCP/DEX A-phosphor						
RFA10	1p	Crimson, 4,5mm phosphor	CB	27.1.87	50p pane DP94A	2.50
RFA10SEL	1p	Crimson s/e left, 4,5mm phosphor RFA10SEL/NP	CB Missing phosphor	29.9.87	50p pane DP94A pane DP94A	1.00 90.00
RFA11SEL	1p	Crimson s/e left, 4mm phosphor	CB	20.10.87	50p pane DP94D	1.25
RFA12	1p	Crimson RFA12BB RFA12NP	SBL Broad band left Missing phosphor	27.1.87	50p pane DP93D pane DP93D pane DP93D	3.00 — 15.00
RFA13	1p	Crimson	SBR	27.1.87	50p ERROR pane DP93E	35.00
RFA50	5p	Claret,4.5mm phosphor	CB	27.1.87	50p pane DP94A	1.75
RFA50SEL	5p	Claret s/e left, 4,5mm phosphor RFA50SEL/NP	CB Missing phosphor	29.9.87	50p pane DP94A pane DP94A	0.80 75.00
RFA51SEL	5p	Claret s/e left, 4mm phosphor	CB	20.10.87	50p pane DP94D	1.25
RFA120	12p	Emerald RFA120AOP	CB Phosphor wash	6.86*	cyl 13 cyl 13	0.60 12.50
RFA130	13p	Chestnut, 4.5mm phosphor	CB	27.1.87	50p pane DP94A	1.25
RFA130SCR	13p	Chestnut 4.5mm phos, screened value	CB	27.1.87	50p pane DP94A	25.00
RFA130SER	13p	Chestnut s/e right, 4,5 mm phosphor RFA130SER/NP	CB Missing phosphor	29.9.87	50p pane DP94A pane DP94A	0.60 25.00
RFA131	13p	Chestnut, 4mm phosphor	CB	27.1.87 27.1.87 3.3.87 4.8.87 4.8.87	cyls 7, 14, 15 £1.30 panes DP68F/G P & O panes DP97, 99 52p Window pane DP100 £1.30 Window pane DP101	0.45 11.50
		RFA131AOP RFA131IMP RFA131NP	Phosphor wash Imperforate Missing phosphor		panes DP68F/G cyl – (horiz pair) cyl 15; pane DP68F	750.00 6.00
RFA131SCR	13p	Chestnut 4mm phos, screened value RFA131SCR/NP	CB Missing phosphor	14.4.87	£1.30 panes DP68F/G panes DP68F/G	1.75 15.00
RFA131SER	13p	Chestnut s/e right, 4mm phosphor	CB	20.10.87	50p pane DP94D	0.75

*"First day" covers exist dated 11.7.86.

3 : Redrawn Numerals FCP/DEX A-phosphor

<i>CC</i>	<i>Value</i>		<i>Phos. Bands</i>	<i>First Issued</i>	<i>Source</i>	<i>Price</i>
RFA132	13p	Chestnut	SBL	27.1.87	£1 pane DP95A	1.10
				27.1.87	50p ERROR pane DP93E	
RFA132SEL	13p	Chestnut s/e left RFA132SEL/2B	SBL Phos displaced left giving 2B	29.9.87	£1 pane DP95A	2.50
					pane DP95A	20.00
RFA133	13p	Chestnut	SBR	27.1.87	50p pane DP93D	0.60
				3.3.87	P & O pane DP98 pane DP93D	
RFA140	14p	Deep blue	CB	23.8.88	cyls 10	0.50
				23.8.88	56p Window pane DP109	
				23.8.88	£1.40 Window pane DP110	
				5.9.88	£1.40 panes DP114/A	
				5.9.88	horiz coil C31A	
				5.9.88	vert coil C31B	
		RFA140AOPa	All-over phosphor		cyl 10	12.50
		RFA140AOPb	All-over phos ('PCP')		pane DP114	2.50
		RFA140NP	Missing phosphor		pane DP109, 114	30.00
RFA140SCR	14p	Deep blue, screened value RFA140SCR/IMP	CB Imperforate	4.89	cyl 11	1.25
					cyl 11 No Dot (hor or vert pair)	350.00
RFA140SET	14p	Deep blue, s/e top, comb perf (Chambon)	CB	11.10.88	56p Window pane DP109A	0.75
				11.10.88	£1.40 Window pane DP110A cyl B27 & B30	
				24.1.89	56p Window pane DP109B	
					pane DP109B	9.00
RFA140SEB	14p	Deep blue, s/e bottom, comb perf (Chambon)	CB	11.10.88	56p Window pane DP109A	0.75
				11.10.88	£1.40 Window pane DP110A cyl B30	
				24.1.89	56p Window pane DP109B	
					panes DP109B, 110A	9.00
RFA140SRT	14p	Deep blue, s/e right & top	CB	24.1.89	56p Window pane DP109B	7.50
					pane DP109B	9.00
RFA140SRB	14p	Deep blue, s/e right & bottom	CB	24.1.89	56p Window pane DP109B	7.50
					pane DP109B	9.00
RFA141SEL	14p	Deep blue, s/e left	SBR	5.9.88	£1 pane DP117	0.90
					pane DP117	100.00
					pane DP117	300.00

3 : Redrawn Numerals FCP/DEX A-phosphor

<i>CC</i>	<i>Value</i>	<i>Phos. Bands</i>	<i>First Issued</i>	<i>Source</i>	<i>Price</i>
RFA142	14p Deep blue	SBR (S7)	5.9.88	50p pane DP116 cyl B1 (APS)	2.00
			8.8.89	50p pane DP116 cyl B2 (comb)	
		SBR (S8)		pane DP116	5.00
		SBR RFA142NP Missing phosphor		pane DP116 pane DP116	2.00 5.00
RFA143SET	14p Deep blue, s/e top rotary perfs (Chambon)	CB	11.10.88	56p Window pane DP109A	12.50
RFA143SET/SCR	14p Deep blue, screened value, s/e top, rotary perfs (Chambon)	CB	11.10.88	£1.40 Window pane DP110A cyl B29	1.75
		All-over phos (phos contaminated)		pane DP110A	10.00
		Missing phosphor		pane DP110A	25.00
RFA143SEB	14p Deep blue, s/e bottom rotary perfs (Chambon)	CB	11.10.88	56p Window pane DP109A	12.50
RFA143SEB/SCR	14p Deep blue, screened value, s/e botom, rotary perfs (Chambon)	CB	11.10.88	£1.40 Window pane DP110A cyl B29	1.75
		All-over phos (phos contaminated)		pane DP110A	10.00
		Missing phosphor		pane DP110A	25.00
RFA144SET	14p Deep blue, s/e top, rotary perfs, value set nearer left (Jumelle)	CB	10.7.89	£1.40 Window pane DP110A cyl B31 (APS)	4.00
RFA144SEB	14p Deep blue, s/e bottom, rotary perfs, value set, nearer left (Jumelle)	CB	10.7.89	£1.40 Window pane DP110A cyl B31 (APS)	4.00
RFA150	15p Bright blue	CB	26.9.89	cyl 3	0.50
		RFA150IMP Imperforate	16.10.89	vert coil C31D cyl 3 (hor or vert pair)	500.00
		RFA150NP Missing phosphor		cyl 3	12.00
RFA151	15p Bright blue	SBL	2.10.89	50p pane DP132	1.50
		RFA151NP Missing phosphor		pane DP132	200.00
RFA152	15p Bright blue, inset band	SBL (I1)	2.10.89	50p pane DP132	1.75
RFA153	15p Bright blue, notched band	SBL (N1)	2.10.89	50p pane DP132	15.00
RFA154	15p Bright blue	SBR	20.3.90	£5 London Life pane DP147	1.50
RFA154A	15p Bright blue, thin value	CB	16.10.89	horiz coil C31C	1.75
RFA170	17p Deep blue	CB	4.9.90	cyl 17	1.75
		RFA170IMP Imperforate	17.9.90	vert coil C34A cyl 17 (hor or vert pair)	950.00
RFA170SCR	17p Deep blue, scr value	CB	4.9.90	cyls 17, 19	0.70

3 : Redrawn Numerals FCP/DEX A-phosphor

<i>CC</i>	<i>Value</i>		<i>Phos. Bands</i>	<i>First Issued</i>	<i>Source</i>	<i>Price</i>
RFA171	17p	Deep blue, inset band RFA171NP	SBL (I1)	4.9.90	50p pane DP162	0.80
			Missing phosphor		pane DP162	8.00
RFA172	17p	Deep blue, notched band RFA172BU	SBL (N1)	4.9.90	50p pane DP162	2.50
			Phos displaced up (S5)		pane DP162	2.50
RFA173	17p	Deep blue RFA173BU	SBR (S7)	4.9.90	50p pane DP162	1.20
			Phos displaced up (S8)		pane DP162	5.00
RFA173SEL 17p		Deep blue, s/e left RFA173SEL/AOP RFA173SEL/NP	SBR	4.9.90	£1 pane DP163/A	0.90
			SBR (S7)	4.9.90	pane DP163	1.10
			Phosphor wash		pane DP163	10.00
			Missing phosphor		pane DP163	20.00
RFA180	18p	Grey-green RFA180BB RFA180NP	2B	27.1.87	£1 pane DP95A	1.25
				3.3.87	P & O pane DP98	
			2B (S10)	27.1.87	50p panes DP93D and ERROR DP93E	1.25
			2B (S12)	27.1.87	50p panes DP93D and ERROR DP93E	1.25
				27.1.87	£1 pane DP95A	
			2B (I2)	3.3.87	P & O Pane DP98	7.50
			2B (N1)	27.1.87	£1 pane DP95A	15.00
			One broad band at left		pane DP93D	250.00
			Missing phosphor		pane DP93D	25.00
			RFA180SCR	18p	Grey-green, screened value	2B
2B (S10)	27.1.87	50p pane DP93D				15.00
2B (S12)	27.1.87	50p pane DP93D				15.00
	27.1.87	£1 pane DP95A				
2B (N1)	27.1.87	£1 pane DP95A				15.00
RFA180SEL	18p	Grey-green, s/e left	2B	29.9.87	£1 pane DP95A	1.75
			2B (S12)	29.9.87	£1 pane DP95A	2.00
RFA180SEL/SCR	18p	Grey-green, screened value, s/e left	2B	29.9.87	£1 pane DP95A	30.00
			2B (S12)	29.9.87	£1 pane DP95A	30.00
RFA180SER	18p	Grey-green, s/e right	2B	29.9.87	£1 pane DP95A	1.25
			2B (N1)	29.9.87	£1 pane DP95A	2.00
RFA180SER/SCR	18p	Grey-green, screened value, s/e right	2B	29.9.87	£1 pane DP95A	30.00
RFA181	18p	Grey-green, inset band	2B (I1)	27.1.87	£1 pane DP95A	3.00
RFA181SCR	18p	Grey-green, screened value, inset band	2B (I1)	27.1.87	£1 pane DP95A	27.50
RFA181SER	18p	Grey-green, s/e right & inset band	2B (I1)	29.9.87	£1 pane DP95A	1.50
RFA181SER/SCR	18p	Grey-green, screened value, s/e right & inset band	2B (I1)	29.9.87	£1 pane DP95A	30.00

3 : Redrawn Numerals FCP/DEX A-phosphor

<i>CC</i>	<i>Value</i>		<i>Phos Bands</i>	<i>First</i>		<i>Price</i>
				<i>Issued</i>	<i>Source</i>	
RFA182	18p	Bright green, band offset left	CB	10.9.91	cyl 5, 7, 11, 12 vert coil C36A	0.50
		RFA182IMP	Imperforate	16.9.91		
		RFA182NP	Missing phosphor			375.00 13.50
RFA182SCR	18p	Bright green, screened value, band offset left	CB	21.1.91	cyl 11, 12 (part)	1.50
RFA183	18p	Deep bright green, band offset left	CB	10.9.91	cyl 4, 5	2.50
RFA190SEL	19p	Orange-red, s/e left	2B	5.9.88	£1 pane DP117	4.50
			2B (S10)	5.9.88	£1 pane DP117	4.50
		RFA190SEL/AOP	Phosphor wash		pane DP117	125.00
		RFA190SEL/NP	Missing phosphor		pane DP117	700.00
RFA191	19p	Orange-red, inset bands	2B (I3)	5.9.88	50p pane DP116 cyl B1 (APS)	1.25
				8.8.89	50p pane DP116 cyl B2 (comb)	
		RFA191NP	Missing phosphor		pane DP116	4.00
RFA192	19p	Orange-red, inset rt band; left band notched	2B (I2, N1)	5.9.88	50p pane DP116 cyl B1 (APS)	1.50
					50p pane DP116 cyl B2 (comb)	
		2B (I2)		pane DP116	4.50	
		2B (S17) (I2)		pane DP116	7.50	
RFA192SER	19p	Orange-red, s/e right & inset band	2B (I2)	5.9.88	£1 pane DP117	1.25
			RFA192SER/AOP	Phosphor wash		pane DP117
		RFA192SER/NP	Missing phosphor		pane DP117	300.00
RFA193SER	19p	Orange-red, s/e right	2B	5.9.88	£1 pane DP117	1.75
			2B (N2)	5.9.88	£1 pane DP117	15.00
RFA200	20p	Black, 4.5mm right phos band*	2B	20.3.90	£5 London Life pane DP147	2.75
			2B (I1)	2.10.89	50p pane DP132	1.75
			2B (S16)(I1)	2.10.89	50p pane DP132	20.00
		RFA200NP	Missing phosphor		pane DP132	425.00
RFA201	20p	Black, 5.5mm right phos band*	2B	20.3.90	£5 London Life pane DP147	5.00
RFA220SER	22p	Orange-red, s/e right, right band inset and 4mm	2B (I2)	4.9.90	£1 pane DP163	1.75
			2B (I2, N1)	4.9.90	£1 pane DP163	10.00
		RFA220SER/NP	Missing phosphor		pane DP163	11.00
RFA221SER	22p	Orange-red, s/e right, two inset bands, 4mm at right	2B (I3)	4.9.90	£1 pane DP163	3.50
			2B (S16)(I3)	4.9.90	£1 pane DP163	3.00
RFA222SER	22p	Orange-red, s/e right, right band inset and 5mm	2B (I2)	1.91	£1 pane DP163A	3.00
			2B (I2, N1)	1.91	£1 pane DP163A	10.00

<i>CC</i>	<i>Value</i>	<i>Phos Bands</i>	<i>First Issued</i>	<i>Source</i>	<i>Price</i>
RFA223SER 22p	Orange-red, s/e right, two inset bands, 5mm at right	2B (I3)	1.91	£1 pane DP163A	4.00
		2B (S16)(I3)	1.91	£1 pane DP163A	4.00
RFA500	50p	Bistre	20.3.90	£5 London Life pane DP147	3.50

**There were two phosphor cylinders used for DP147, one with a 4.5mm phosphor band at the right edge of the pane and one with 5.5mm band. They are most easily distinguished by the gap between the bands – 11mm for RFA200 and 10mm for RFA201.*

<i>CC</i>	<i>Value</i>		<i>First Issued</i>	<i>Source</i>	<i>Price</i>
(c) PCP1/DEX					
RP35	3½p	Purple-brown	30.3.83	cyl 17	0.50
RP70	7p	Brick-red	29.10.85	cyls 25, 26	1.70
RP71	7p	Brick-red, translucent paper	29.10.85	cyl 25	5.00
RP170	17p	Grey-blue	30.3.83	cyl 7	0.75
			3.9.84	vert coil C34	
			3.9.84	£1.70 panes DP69/A	
			29.7.86	£1 pane DP91	
RP171	17p	Grey-blue, D underprint	5.3.85	£1.55 panes DP69 D/ E	0.90
RP172	17p	Grey-blue 2B, error of paper 2B (S16)	¶10.86	50p pane DP82D	60.00
			¶10.86	pane DP82D	120.00
RP180	18p	Grey-green, PCP1	20.10.86	£1.80 panes DP92/A	0.80
			20.10.86	vert coil C35	
RP181	18p	Grey-green, PCP2	20.10.86	£1.80 panes DP92/ A	3.00
RP205	20½p	Ultramarine RP205IMP	30.3.83	cyl 1	1.50
		Imperforate		cyl 1 (hor or vert pr)	£1100
RP230	23p	Brown-red RP230IMP	30.3.83	cyl 1	1.30
		Imperforate		cyl 1 (hor or vert pr)	£1150
RP280	28p	Deep violet RP280IMP	30.3.83	cyl 1	1.00
		Imperforate		cyl 1 (hor or vert pr)	£1250
RP310	31p	Purple RP310IMP	30.3.83	cyl 2	1.25
		Imperforate		cyl 2 (hor or vert pair)	£1000
RP340	34p	Olive-sepia	28.8.84	cyl 1	1.15

<i>CC</i>	<i>Value</i>		<i>First Issued</i>	<i>Source</i>	<i>Price</i>
(d) ACP/DEX					
All are Bright, except for those marked as ACPD for Dull.					
RA10	1p	Crimson	26.7.88 10.9.91	vert coil C2B 50p pane DP173/B	0.40
RA20	2p	Deep green RA20IMP	26.7.88	cyl 16 cyl 16 (horiz pair)	0.25 £1750
		Imperforate			
RA20SCR	2p	Deep Green, screened value	26.7.88	cyl 16 (part)	0.80
RA20SEL	2p	Deep green, s/e left	10.9.91	£1 pane DP174	0.60
RA20SER	2p	Deep green, s/e right	10.9.91	£1 pane DP174	0.60
RA21	2p	Green	5.9.88	RD 14p coil CS15	2.50
RA30	3p	Bright pink	21.1.92	cyl 46	0.40
RA30SCR	3p	Bright pink, screened value	10.10.89	RD 15p coil CS16	1.00
RA31SCR	3p	Bright pink, screened value, thinner paper	?11.90	RD 15p coil CS17	4.00
RA35	3½p	Purple-brown	14.9.83	Royal Mint pane DP65	1.10
RA40	4p	New blue	1.10.91	RD 18p coil CS19	0.40
RA40SCR	4p	New blue, screened value	26.7.88 10.10.89 27.11.90	cyl 15 RD 15p coil CS16 RD 17p coil CS18	0.30
		RA40SCR/IMP Imperforate		cyl 15 (horiz pair)	£1500
RA41SCR	4p	New blue, screened value, thinner paper	?11.90	RD 15p coil CS17	3.00
RA42SCR	4p	New blue, ACPD, screened value	?10.91	cyl 15	0.60
RA50	5p	Claret, solid background	26.7.88 27.11.90 1.10.91	cyl 10 RD 17p coil CS18 RD 18p coil CS19	0.30
		RA50IMP Imperforate		cyl 10 (horiz pair)	£2500
RA50SCR	5p	Claret, solid background, screened value	26.7.88	cyl 10	0.80
RA60	6p	Olive-yellow	10.9.91	cyl 11	0.35
RA100	10p	Orange	4.9.90	cyl 21	0.35
RA170	17p	Slate-blue	19.6.84 4.9.84 8.1.85 18.3.86	cyls 7, 10, 11, 13, 15 Heritage pane DP72 Times panes DP77, 80 Brit Rail panes DP86, 89	0.60
		RA170IMP Imperforate		cyl 13 (hor or vert pr)	250.00
RA171	17p	Slate-blue, translucent paper	4.9.84	Heritage pane DP72	40.00

<i>CC</i>	<i>Value</i>		<i>First Issued</i>	<i>Source</i>	<i>Price</i>
RA180	18p	Grey-green	28.8.84	cyls 4, 5	0.65
			3.3.87	P & O pane DP96	
			14.4.87	£1.80 panes DP92D/E	
			4.8.87	72p Window pane DP102	
			4.8.87	£1.80 Window pane DP103	
			29.9.87	£1.80 panes DP92F/G	
			3.5.88*	vert coil C36	
* P.O. date but known 2.88.					
RA180SCR	18p	Grey-green, screened value RA180IMP Imperforate	28.8.84	cyl 4	15.00
				cyl 4 Dot (hor or vert pair)	80.00
RA190	19p	Orange-red	23.8.88	cyls 1, 2, 3	0.50
			23.8.88	76p Window pane DP111	
			23.8.88	£1.90 Window pane DP112	
			5.9.88	£1.90 panes DP115/A	
			5.9.88	vert coil C37	
	RA190IMP Imperforate	cyl – (hor or vert pr)	500.00		
RA190SET	19p	Orange-red, s/e top, comb perfs (Chambon)	11.10.88	76p Window pane DP111A	1.00
			11.10.88	£1.90 Window pane DP112A cyl B12 & B17	
			24.1.89	76p Window pane DP111B	
RA190SEB	19p	Orange-red s/e bottom, comb perfs (Chambon)	11.10.88	76p Window pane DP111A	1.00
			11.10.88	£1.90 Window pane DP112A cyl B12 & B17	
			24.1.89	76p Window pane DP111B	
RA190SRT	19p	Orange-red, s/e right & top	24.1.89	76p Window pane DP111A	8.00
RA190SRB	19p	Orange-red, s/e right & bottom	24.1.89	76p Window pane DP111A	8.00
RA191	19p	Orange-red, ACPD (resembling PCP1)	23.8.88	cyls 1, 2	1.30
RA191A	19p	Orange-red, ACPD (resembling PCP2)	23.8.88	£1.90 Window pane DP112A	1.50
RA192SET	19p	Orange-red, s/e top, rotary perfs, value set nearer left (Jumelle)	26.6.89	£1.90 Window pane DP112B cyl B19 (APS)	2.50
RA192SEB	19p	Orange-red, s/e bottom rotary perfs, value set nearer left (Jumelle)	26.6.89	£1.90 Window pane DP112B cyl B19 (APS)	2.50
RA193SET	19p	Orange-red, s/e top rotary perfs (Chambon)	11.10.88	76p Window pane DP111A	6.00
			11.10.88	£1.90 Window pane DP112A cyl B12	
RA193SEB	19p	Orange-red, s/e bottom rotary perfs (Chambon)	11.10.88	76p Window pane DP111A	6.00
			11.10.88	£1.90 Window pane DP112A cyl B12	
RA200	20p	Sea-green	23.8.88	cyl 11	0.45
			12.90	cyl 12 (reissue)	

3 : Redrawn Numerals ACP/DEX

<i>CC</i>	<i>Value</i>		<i>First Issued</i>	<i>Source</i>	<i>Price</i>
RA201	20p	Black	26.9.89 16.10.89 16.10.89	cyl 12 horiz coil C38 vert coil C39	0.45
		RA201IMP Imperforate		cyl 12 (hor or vert pr)	650.00
RA201SCR	20p	Black, screened value	26.9.89 16.10.89	cyl 12 No Dot horiz coil C38	5.00
RA202	20p	Black, ACPD	?1.90	cyl 12	1.40
RA202SCR	20p	Black, ACPD, screened value	?1.90	cyl 12 No Dot	15.00
RA203SEL	20p	Black, s/e left	2.10.89	£1 pane DP133	1.30
RA203SEL/SCR	20p	Black, s/e left, screened value	15.12.89	£1 pane DP133 cyl B9	3.50
RA203SER	20p	Black, s/e right	2.10.89	£1 pane DP133	1.20
RA203SER/SCR	20p	Black, s/e right, screened value	15.12.89	£1 pane DP133 cyl B9	3.50
RA220	22p	Yellow-green RA220IMP Imperforate	28.8.84	cyl 6 cyl 6 (horiz pair)	0.60 £1000
RA220SCR	22p	Yellow-green, screened value	5.87	cyl 10	1.40
RA221	22p	Orange-red	4.9.90 17.9.90	cyl 10 vert coil C40	1.00
RA221SCR	22p	Orange-red, screened value RA221SCR/IMP Imperforate	4.9.90	cyls 10, 11 (part of sheet) cyl 10 (hor or vert pr)	1.75 600.00
RA222	22p	Orange-red, ACPD,	?12.90	cyls 10, 11	4.00
RA222SCR	22p	Orange-red, ACPD, screened value	?12.90	cyls 10, 11	7.50
RA230	23p	Bright green	23.8.88	cyl 6	0.85
RA240	24p	Violet	6.88	cyl 2 (part of sheet)	1.40
RA240SCR	24p	Violet, screened value	28.8.84	cyls 1, 2	2.50
RA241	24p	Indian red RA241IMP Imperforate	26.9.89	cyl 2 cyl 2 (hor or vert pr)	1.50 £2250
RA241SCR	24p	Indian red, screened value	26.9.89	cyl 2 (part of sheet)	10.00
RA242	24p	Red-brown	10.9.91 10.9.91 16.9.91	50p pane DP173/B cyl 1 vert coil C41	0.55
RA242SCR	24p	Red-brown, screened value RA242SCR/IMP Imperforate	10.9.91	cyl 1 cyl 1 (hor or vert pr)	2.50 450.00
RA242SEL	24p	Red-brown, s/e left	10.9.91	£1 pane DP174	0.80
RA242SER	24p	Red-brown, s/e right	10.9.91	£1 pane DP174	0.80
RA243SCR	24p	Red-brown, ACPD, screened value	?1993	cyl 1	2.00

<i>CC</i>	<i>Value</i>		<i>First Issued</i>	<i>Source</i>	<i>Price</i>
RA244SCR 24p	Red-brown, screened value, translucent paper		1991	cyl 1	4.00
RA245SEL 24p	Bright red-brown, s/e left		22.9.92	£1 pane DP174	4.00
RA245SER 24p	Bright red-brown, s/e right		22.9.92	£1 pane DP174	4.00
RA260 26p	Red		4.8.87	£1.04 Window pane DP104	4.50
RA260SCR 26p	Red, screened value		4.8.87	£1.04 Window pane DP104	7.50
RA261 26p	Drab		4.9.90	cyl 4	0.80
RA270 27p	Red-brown		23.8.88 23.8.88	£1.08 Window pane DP113 cyl 1	1.25
RA270SCR 27p	Red-brown, screened value		23.8.88	cyl 1 (part traces of screening)	5.00
RA270SET 27p	Red-brown, s/e top		11.10.88	£1.08 Window pane DP113A	4.25
RA270SEB 27p	Red-brown, s/e bottom		11.10.88	£1.08 Window pane DP113A	4.25
RA271 27p	Violet		4.9.90	cyl 1	1.25
RA280 28p	Deep violet		7.10.86	cyl 1	1.10
RA281 28p	Ochre		23.8.88	cyl 4	1.25
RA282 28p	Slate-blue RA282IMP	Imperforate	10.9.91	cyl 4 cyl 4 (hor pair)	1.10 £1750
RA290 29p	Reddish violet		26.9.89	cyl 4	1.50
RA300 30p	Grey-green		26.9.89	cyl 2	2.75
RA300SCR 30p	Grey-green, screened value		26.9.89	cyl 2 No Dot (part)	1.50
RA310 31p	Purple RA310IMP	Imperforate	17.9.85	cyl 2 cyl 2 No Dot (hor or vert pair)	1.10 £1200
RA311 31p	Ultramarine		4.9.90	cyl 8	1.30
RA320 32p	Greenish blue		23.8.88	cyl 1	7.50
RA320SCR 32p	Greenish blue, screened value RA320SCR/IMP	Imperforate	23.8.88	cyl 1 cyl 1 (hor or vert pr)	1.50 £1500
RA330 33p	Light emerald		4.9.90	cyl 1	1.40
RA331 33p	Pale emerald		11.2.92	vert coil C50	1.75
RA340SCR 34p	Olive-sepia, screened value		24.6.86	cyl 2	1.40
RA341SCR 34p	Slate-blue, screened value		26.9.89	cyl 2	1.75
RA342SCR 34p	Reddish violet, screened value		10.9.91	cyl 2	1.50
RA350 35p	Sepia		23.8.88	cyl 1	10.00
RA350SCR 35p	Sepia, screened value RA350SCR/IMP	Imperforate	23.8.88	cyl 1 cyl 1 (hor or vert pr)	1.50 £1700

3 : Redrawn Numerals ACP/DEX

<i>CC</i>	<i>Value</i>		<i>First Issued</i>	<i>Source</i>	<i>Price</i>
RA351	35p	Yellow	10.9.91	cyl 1	0.95
RA352	35p	Deep yellow	6.92	cyl 1 (warrant 791)	1.25
RA370	37p	Bright rose-red	26.9.89	cyl 2	2.00
RA370SCR	37p	Bright rose-red, screened value	26.9.89	cyl 2	2.00
RA390	39p	Bright mauve	10.9.91 11.2.92	cyl 2, 3, 4 vert coil C54	1.75
RA390SCR	39p	Bright mauve, screened value	10.9.91	cyl 2	2.00
RA500	50p	Ochre RA500IMP	21.1.92	cyl 36 cyl 36 (hor or vert pair)	1.40 £1500
		Imperforate			

e) Non-phosphor paper

RN500	50p	Ochre	13.3.90	cyl 35	1.50
RN501	50p	Deep yellow-ochre	10.90	cyl 36	2.25
RN750*	75p	Grey-black	26.7.88	cyl 1	2.50
RN750SCR	75p	Grey-black, screened value	26.7.88	cyl 1	4.00

**Note: previously numbered RF750*