

## SECTION 6B

# Non-Standard Design Machins & Decimal Definitives with Improved Security Features

## (I) Pricing In Proportion Machins with Improved Security Features

As well as small format NVIs, Large PIP NVI values also received Improved Security features on stamps issued from February 2009. Improved Security PIP stamps come from 3 sources – sheet stamps and business sheets, printed by De La Rue and Walsall and booklets printed solely by Walsall.

Improved Security features mirror those found on other sheet, business sheet and booklet issues, details of which can be found in Chapters 3B & 5B.

**Security Coding.** Improved Security PIP 1st Large and 2nd Large from business sheets and booklets bear code letters, initially on 2009 and 2010 issues in the top-right corner, then on 2011 to 2013 issues in the lower-right corner and subsequently to the left of the Queen’s diadem, indicating their source, much in the same way as small format NVIs.

Sheet stamps still show no source code. However, on PIP issues, due to their larger size, the positioning of the code letter which replaces another in the wavy “ROYAL MAIL” wording overprint is different from small format stamps. The code letters adopted are fairly intuitive and are listed below:

B	=	Business sheet
F	=	Definitive booklet of Four

The location and format of these codings are illustrated in the diagrams overleaf. The code letter is highlighted in darker type and the word it is contained in slightly paler lettering, but this is enhanced to show the positioning – on the actual stamp it is simply part of the normal iridescent overprint. As they are readily identifiable with the naked eye, each is treated as a basic new stamp. Stamps from conventional sheets of 50 have no code letters and retain the correctly spelled “ROYAL MAIL” in these positions.

**Code B**

**Business sheets**



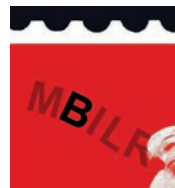
2009 Issue



2010 Issue



2011-13 Issues



2014-20 Issues

**Code F**

**Books of Four**



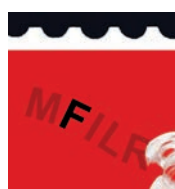
2009 Issue



2010 Issue



2011-13 Issues



2014-20 Issues

**Date Coding.** Similar to the Source Codes detailed above, issues from 2010 onwards also show a hidden date code, indicating the year in which the stamps were printed. These are commonly collected and are included in our listings. The position of the dates differ from those on small Machins and diagrammatic illustrations, in the same style as the source codes, are shown below.



## IMPROVED SECURITY PIP NVI VALUES AT POSTAL RATE CHANGES

(Dates given in bracket are those of initial availability)

<i>Effective</i>	<i>1st Large</i> (17.2.09)	<i>2nd Large</i> (17.2.09)
7.4.08	52p	42p
6.4.09	61p	47p
6.4.10	66p	51p
4.4.11	75p	58p
30.4.12	90p	69p
31.3.14	93p	73p
30.3.15	95p	74p
29.3.16	96p	75p
27.3.17	98p	76p
26.3.18	£1.01	79p
25.3.19	£1.06	83p
23.3.20	£1.15	88p
1.1.21	£1.29	96p

## (A) Iridescent Overprint. Unprinted Backing Paper.

### De La Rue

**Gravure. OFNP/SAN. A2(B) Phosphor with blue fluor additive. No fluor in paper coating. Kiss die-cut to simulate perf. 15 x 14 (E1) .**

**Translucent backing paper, rouletted on edges to facilitate separation.**

### No Date Code

<i>CC</i>	<i>Value</i>		<i>Phos.</i> <i>Code</i>	<i>Bands</i>	<i>First Issued</i> <i>or Printed</i>	<i>Source</i>	<i>Price</i> <i>Single Gutter</i>	
<b>(a) No date code. Gravure, sheet (no code) or business sheet (code B) printings. Iridescent security overprint. Type 1 security slits, unless stated.</b>								
PISLD1	2nd Large	Bright blue		2B	17.2.09	cyl D1D1(D1)	2.25	4.50
				2B (S17)	17.2.09	cyl D1D1(D1)	10.00	20.00
PISLD2	2nd Large	Bright blue, dull fluor	B	2B	31.3.09	bus sheet Type 6A	2.75	–
					2B (I2)	31.3.09	bus sheet Type 6A	12.50
PISLD3	2nd Large	Bright blue, very dull fluor	B	2B	8.6.09	bus sheet Type 6A	3.75	–
PIFLD1	1st Large	Gold		2B	17.2.09	cyl D1D1(D1)	2.60	5.20
				2B (S16)	17.2.09	cyl D1D1(D1)	15.00	30.00
				2B (S17)	17.2.09	cyl D1D1(D1)	17.50	35.00
PIFLD2	1st Large	Gold, dull fluor	B	2B	31.3.09	bus sheet Type 6A	2.95	–

**6B : Improved Security Non Standard Machins & Definitives – De La Rue PIP Machins**

CC	Value	Code	Phos. Bands	First Issued or Printed	Source	Price		
						Single	Gutter	
PIFLD3	1st Large	Gold, very dull fluor	B	2B	9.6.09	bus sheet Type 6A	3.75	–
				2B (I2)	9.6.09	bus sheet Type 6A	13.50	–
PIFLD4	1st Large	Gold, dull fluor, Type 2 slits	2B	12.10.09	cyl D1D1(D1)	3.75	7.50	

**Date Code 10**

CC	Value	Code	Phos. Bands	First Issued or Printed	Source	Price	
						Single	Gutter

**(b) Date code 10. Gravure, sheet (no code) or business sheet (code B) printings. Iridescent security overprint. Type 2 security slits.**

PI0SLD1	2nd Large	Bright blue	2B	26.1.11	cyl D1D1(D1)	8.75	17.50
PI0SLD2	2nd Large	Bright blue	B 2B	7.3.11	bus sheet Type 6B	17.50	–
PI0FLD1	1st Large	Gold	2B	10.6.10	cyl D1D1(D1)	5.50	11.00
				2B (S16)	10.6.10	cyl D1D1(D1)	15.00
PI0FLD2	1st Large	Gold	B 2B	10.6.10	bus sheet Type 6B	7.00	–

**Date Code 11**

CC	Value	Code	Phos. Bands	First Issued or Printed	Source	Price	
						Single	Gutter

**(c) Date code 11. Gravure, sheet (no code) or business sheet (code B) printings. Iridescent security overprint. Type 2 security slits.**

PI1SLD1	2nd Large	Bright blue	2B	28.3.11	cyl D1D1(D1)	2.75	5.50	
PI1SLD2	2nd Large	Bright blue	B 2B	20.4.11	bus sheet Type 6C	7.50	–	
PI1FLD1	1st Large	Gold	2B	2.2.11	cyl D1D1(D1)	6.50	13.00	
PI1FLD2	1st Large	Gold	B	2B	12.4.11	bus sheet Type 6C	3.00	–
				2B (I2)	12.4.11	bus sheet Type 6C	15.00	–
				2B (IIR)(I2)	1.11	bus sheet Type 6C	22.50	–
				2B (IIL)(I2)	1.11	bus sheet Type 6C	22.50	–

**Date Code 12**

CC	Value	Code	Phos. Bands	First Issued or Printed	Source	Price	
						Single	Gutter

**(d) Date code 12. Gravure, sheet (no code) printings. Iridescent security overprint. Type 2 security slits.**

PI2SLD1	2nd Large	Bright blue	2B	9.7.12	cyl D1D1(D1)	2.50	5.00
PI2FLD1	1st Large	Royal Mail red	2B	3.1.13	cyl D1D1(D1)	2.50	5.00

## Date Code 13

CC	Value		Phos. Bands	First Issued or Printed	Source	Price	
						Single	Gutter
<b>(e) Date code 13. Gravure, sheet (no code) printings. Iridescent security overprint. Type 2 security slits.</b>							
PI3SLD1	2nd Large	Bright blue	2B	21.6.13	cyl D1D1(D1)	2.50	5.00
			2B (S16)	7.5.13	cyl D1D1(D1)	17.50	35.00
PI3FLD1	1st Large	Royal Mail red	2B	18.9.13	cyl D1D1(D1)	3.25	6.50
			2B (S16)	28.7.13	cyl D1D1(D1)	15.00	30.00

## Date Code 14

CC	Value		Phos. Bands	First Issued or Printed	Source	Price	
						Single	Gutter
<b>(f) Date code 14. Gravure, sheet (no code) printings. Iridescent security overprint. Type 2 security slits.</b>							
PI4SLD1	2nd Large	Bright blue	2B	20.3.14	cyl D1D1(D1)	2.20	
PI4FLD1	1st Large	Royal Mail red	2B	7.4.14	cyl D1D1(D1)	2.55	

## Date Code 15

CC	Value		Phos. Bands	First Issued or Printed	Source	Price	
						Single	Gutter
<b>(g) Date code 15. Gravure, sheet (no code) printings. Iridescent security overprint. Type 2 security slits.</b>							
PI5SLD1	2nd Large	Bright blue, bright fluor	2B	30.4.15	cyl D1D1(D1)	2.25	4.50
PI5SLD2	2nd Large	Bright blue, dull fluor	2B	3.9.15	cyl D1D1(D1)	3.75	7.50
PI5FLD1	1st Large	Royal Mail red, bright fluor	2B	30.4.15	cyl D1D1(D1)	2.75	5.50
			2B (S16)	15.5.15	cyl D1D1(D1)	30.00	–
PI5FLD2	1st Large	Royal Mail red, dull fluor	2B	1.10.15	cyl D1D1(D1)	4.00	8.00

## Date Code 16

CC	Value		Phos. Bands	First Issued or Printed	Source	Price	
						Single	Gutter
<b>(h) Date code 16. Gravure, sheet (no code) printings. Iridescent security overprint. Type 2 security slits.</b>							
PI6SLD1	2nd Large	Bright blue	2B	4.2.16	cyl D1D1(D1)	2.65	5.30
PI6FLD1	1st Large	Royal Mail red	2B	6.4.16	cyl D1D1(D1)	3.00	6.00
PI6FLD2	1st Large	Royal Mail deeper red	2B	28.9.16	cyl D1D1(D1)	3.75	7.50

# Walsall

**Gravure. OFNP/SAN. A2(B) Phosphor with blue fluor additive.  
No fluor in paper coating. Kiss die-cut to simulate perf. 15 x 14 (E1) .  
Translucent (sheets & business sheets) or opaque (booklets) backing paper,  
rouletted on edges to facilitate separation.**

## No Date Code

<i>CC</i>	<i>Value</i>		<i>Phos.</i>	<i>First Issued</i>		<i>Price</i>			
			<i>Code</i>	<i>Bands</i>	<i>Fluor</i>	<i>or Printed</i>	<i>Source</i>		
<b>(a) No date code. Gravure, booklet (code F) printings. Iridescent security overprint. Type 2 security slits.</b>									
PISLW1	2nd Large	Bright blue	F	2B	Bright	31.3.09	4 (£1.64)	SP101	2.50
PISLW2	2nd Large	Deep bright blue	F	2B	Dull	11.09		SP101	4.00
PISLW3	2nd Large	Bright blue	F	2B/1SB	Dull	3.10		SP101	7.50
PIFLW1	1st Large	Gold	F	2B	Bright	31.3.09	4 (£2.08)	SP99	3.00
PIFLW2	1st Large	Gold	F	2B	Dull	7.09		SP99	4.00
PIFLW3	1st Large	Pale yellowish gold	F	2B	V.Dull	3.10		SP99	4.95

## Date Code 10

<i>CC</i>	<i>Value</i>		<i>Phos.</i>	<i>First Issued</i>		<i>Price</i>			
			<i>Code</i>	<i>Bands</i>	<i>Fluor</i>	<i>or Printed</i>	<i>Source</i>		
<b>(b) Date code 10. Gravure, booklet (code F) printings. Iridescent security overprint. Type 2 security slits.</b>									
PI0SLW1	2nd Large	Bright blue	F	2B		8.5.10	4 (£2.04)	SP122	22.50
			F	2B/1SB		8.5.10		SP122	25.00
PI0FLW1	1st Large	Gold	F	2B		8.5.10	4 (£2.64)	SP121	5.25
PI0FLW2	1st Large	Gold, pale Queen's head	F	2B	Dull	2.11		SP121	6.00
PI0FLW3	1st Large	Gold	F	2B	Bright	4.11		SP121	7.00

## Date Code 11

<i>CC</i>	<i>Value</i>		<i>Phos.</i>	<i>First Issued</i>		<i>Price</i>			
			<i>Code</i>	<i>Bands</i>	<i>Fluor</i>	<i>or Printed</i>	<i>Source</i>		
<b>(c) Date code 11. Gravure, booklet (code F) printings. Iridescent security overprint. Type 2 security slits.</b>									
PI1SLW1	2nd Large	Bright blue	F	2B		23.3.11	4 (£2.32)	SP136	2.00
PI1SLW2	2nd Large	Deep bright blue	F	2B		9.11		SP136	3.25
PI1FLW1	1st Large	Gold	F	2B		23.3..11	4 (£3.00)	SP135	2.25
PI1FLW2	1st Large	Gold	F	2B	Dull	9.11		SP135	3.50

## Date Code 12

<i>CC</i>	<i>Value</i>		<i>Phos. Code Bands</i>	<i>First Issued or Printed</i>	<i>Source</i>	<i>Price</i>
<b>(d) Date code 12. Gravure, business sheet (code B) or booklet (code F) printings. Iridescent security overprint. Type 2 security slits.</b>						
PI2SLW1	2nd Large	Bright blue	B 2B	29.2.12	bus sheet Type 10A	2.50
			2B (S17)	13.4.12	bus sheet Type 10A	14.00
			2B (I2)	10.12	bus sheet Type 10A	16.50
			2B/IST (S17)	6.12	bus sheet Type 10A	16.50
			2B/IIR	6.12	bus sheet Type 10A	13.75
			2B/IIR (S17)	1.13	bus sheet Type 10A	19.25
		Twin red lines running vertically through stamp	2B/TRL	29.3.12	bus sheet Type 10A	6.50
PI2SLW2	2nd Large	Bright blue	F 2B	25.7.12	4 (£2.76) SP136A	3.00
			2B/IST	25.7.12	SP136A	10.00
			2B/ISB	25.7.12	SP136A	17.50
PI2FLW1	1st Large	Royal Mail red	B 2B	3.1.13	bus sheet Type 10A	3.25
			2B (S16)	10.13	bus sheet Type 10A	15.00
			2B (S17)	3.1.13	bus sheet Type 10A	2.75
			2B/ISB	5.13	bus sheet Type 10A	25.00
			2B/ISB (S17)	5.13	bus sheet Type 10A	12.50
			2B/IIL (S17)	3.13	bus sheet Type 10A	11.00
			2B/IST/IIR (S17)	4.13	bus sheet Type 10A	12.50
PI2FLW2	1st Large	Royal Mail red	F 2B	3.1.13	4 (£3.60) SP159	2.50
			2B/ISB	10.13	SP159	10.00

## Date Code 13

<i>CC</i>	<i>Value</i>		<i>Phos. Code Bands</i>	<i>First Issued or Printed</i>	<i>Source</i>	<i>Price</i>
<b>(e) Date code 13. Gravure, business sheet (code B) or booklet (code F) printings. Iridescent security overprint. Type 2 security slits unless stated.</b>						
PI3SLW1	2nd Large	Pale bright blue, type 1 slits	B 2B bright	23.8.13	bus sheet Type 10B	3.75
			2B (S17)	3.3.13	bus sheet Type 10B	15.00
PI3SLW2	2nd Large	Pale bright blue	F 2B dull	23.6.13	4 (£2.76) SB2(13)B	4.00
			2B/IST	23.6.13	SB2(13)B	12.00
			2B/ISB	23.6.13	SB2(13)B	12.00
PI3SLW3	2nd Large	Pale bright blue	B 2B (S17)	1.5.13	bus sheet Type 10B	12.65
			2NB (S17)	1.5.13	bus sheet Type 10B	22.50
			2B (S16) (I1)	30.8.13	bus sheet Type 10B	15.00
PI3SLW4	2nd Large	Bright blue	B 2B	2.9.13	bus sheet Type 10B	5.00
			2B (S16)	2.9.13	bus sheet Type 10B	13.75
			2B/IIL	11.13	bus sheet Type 10B	12.50
PI3SLW5	2nd Large	Bright blue	F 2B bright	5.14	4 (£2.76) SB2(13)B	5.00

**6B : Improved Security Non Standard Machins & Definitives – Walsall PIP Machins**

CC	Value		Phos.		Fluor	First Issued or Printed	Source	Price
			Code	Bands				
PI3FLW1	1st Large	Red	F	2B	dull	12.8.13	4 (£3.60) SB1(23)A	3.50
PI3FLW2	1st Large	Red, type 1 slits	B	2B		14.10.13	bus sheet Type 10B	3.75
						4.3.13	bus sheet Type 10B	17.50
						13.5.13	bus sheet Type 10B	20.00
						4.3.13	bus sheet Type 10B	10.00
PI3FLW3	1st Large	Red	B	2B		13.5.13	bus sheet Type 10B	5.00
						13.5.13	bus sheet Type 10B	15.00
						13.5.13	bus sheet Type 10B	16.50
PI3FLW4	1st Large	Red	F	2B	bright	9.14	4 (£3.60) SB1(23)A	5.00

**Date Code 14**

CC	Value		Phos.		Fluor	First Issued or Printed	Source	Price
			Code	Bands				

**(f) Date code 14. Gravure, business sheet (code B) or booklet (code F) printings. Iridescent security overprint. Type 2 security slits.**

PI4SLW1	2nd Large	Bright blue	B	2B		7.1.14	bus sht Type 10C & 12	2.75
						7.1.14	bus sht Type 10C & 12	12.50
						7.1.14	bus sht Type 10C & 12	12.50
						7.14	bus sht Type 12	8.25
						7.14	bus sht Type 12	16.50
PI4SLW2	2nd Large	Bright blue	F	2B		31.7.14	4 (£2.92) SB2(13)C	2.25
PI4FLW1	1st Large	Red	B	2B		3.1.14	bus sht Type 10C & 12	2.75
						3.1.14	bus sht Type 10C & 12	17.50
						3.1.14	bus sht Type 10C & 12	9.25
PI4FLW2	1st Large	Red	F	2B		31.7.14	4 (£3.72) SB1(23)B	2.60
						31.7.14	SB1(23)B	9.00

**Date Code 15**

CC	Value		Phos.		Fluor	First Issued or Printed	Source	Price
			Code	Bands				

**(g) Date code 15. Gravure, business sheet (code B) or booklet (code F) printings. Iridescent security overprint. Type 2 security slits.**

PI5SLW1	2nd Large	Bright blue	B	2B		28.4.15	bus sheet Type 12A	5.00
PI5SLW2	2nd Large	Bright blue	F	2B		17.3.15	4 (£2.96) SB2(13)E	5.00
PI5SLW3	2nd Large	Brighter blue	B	2B		15.9.15	bus sheet Type 12A	6.00
PI5FLW1	1st Large	Red	F	2B		20.3.15	4 (£3.80) SB1(23)D	3.50
PI5FLW2	1st Large	Red	B	2B	dull	23.2.15	bus sheet Type 12A	5.00
						2015	bus sheet Type 12A	40.00
						15.9.15	bus sheet Type 12A	17.50
PI5FLW3	1st Large	Red	B	2B	bright	12.6.15	bus sheet Type 12A	6.50



## Business Sheet Top Panels

### Type 6A



Top Panel Types 6A, 6B & 6C  
– 2009-11 De La Rue sheets  
Matrix stripped  
containing PIP Large NVIs  
No printer's imprint

CC No.	Value		Sheet Type	Printer	Date Code	Contents	First Issued	Pane	Price
<b>(a) No date code. Stamps in strip, matrix stripped, printing date on reverse. Printed by De La Rue in gravure.</b>									
BSSL2	2nd Large	Bright blue	6A	D	–	PISLD2, 3	31.3.09	SP106	11.50
BSFL2	1st Large	Gold	6A	D	–	PIFLD2, 3	31.3.09	SP104	12.00
<b>(b) Date code 10. Stamps in strip, matrix stripped, printing date on reverse. Printed by De La Rue in gravure.</b>									
BSSL3	2nd Large	Bright blue	6B	D	10	PIOSLD2	7.3.11	SP134	125.00
BSFL3	1st Large	Gold	6B	D	10	PIOFLD2	10.6.10	SP123	40.00
<b>(c) Date code 11. Stamps in strip, matrix stripped, printing date on reverse. Printed by De La Rue in gravure.</b>									
BSSL4	2nd Large	Bright blue	6C	D	11	PIISLD2	20.4.11	SP134A	25.00
BSFL4	1st Large	Gold	6C	D	11	PIIFLD2	12.4.11	SP123A	20.00

### Type 10A

Top Panel Types  
10A, 10B & 10C  
– 2012-14 Walsall sheets  
Matrix stripped  
containing PIP Large NVIs  
FSC accreditation panel,  
re-arranged contact details,  
Text-phone dialing code 08456



**6B : Improved Security Non Standard Machins & Definitives – Business Sheet Top Panels**

CC No.	Value	Sheet		Date		Contents	First Issued or Printed	Pane	Price
		Type	Printer	Code	Code				

**(d) Date code 12. Stamps in strip, matrix stripped, printing date on reverse. FSC Panel added. Printed by Walsall in gravure.**

BSSL5	2nd Large	Bright blue	10A	W	12	PI2SLW1	29.2.12	SP152	12.50
BSFL6	1st Large	Red	10A	W	12	PI2FLW1	3.1.13	SP162	15.00

**(e) Date code 13. Stamps in strip, matrix stripped, printing date on reverse. FSC Panel added. Printed by Walsall in gravure.**

BSSL6	2nd Large	Bright blue, Type 1 security slits	10B	W	13	PI3SLW1	23.8.13	SP152A	18.00
BSSL6A	2nd Large	Bright blue, Type 2 security slits	10B	W	13	PI3SLW3, 4	1.5.13	SP152A	20.00
BSFL7	1st Large	Red Type 1 security slits	10B	W	13	PI3FLW2	4.10.13	SP162A	18.50
BSFL7A	1st Large	Red Type 2 security slits	10B	W	13	PI3FLW3	13.5.13	SP162A	25.00

**(f) Date code 14. Stamps in strip, matrix stripped, printing date on reverse. FSC Panel added. Printed by Walsall in gravure.**

BSSL7	2nd Large	Bright blue	10C	W	14	PI4SLW1	7.1.14	SP152B	13.50
BSFL8	1st Large	Red	10C	W	14	PI4FLW1	3.1.14	SP162B	14.00

**Type 12**



**Top Panel Types  
12 & 12A  
– 2014-15 Walsall sheets  
Matrix stripped  
containing PIP Large NVIs  
FSC accreditation panel,  
re-arranged contact details,  
Text-phone dialing code 03456**

CC No.	Value	Sheet		Date		Contents	First Issued or Printed	Pane	Price
		Type	Printer	Code	Code				

**(g) Date code 14. Stamps in strip, matrix stripped, printing date on reverse. FSC Panel added. Printed by Walsall in gravure.**

BSSL8	2nd Large	Bright blue	12	W	14	PI4SLW1	31.7.14	–	13.50
BSFL9	1st Large	Red	12	W	14	PI4FLW1	31.7.14	–	14.00

CC No.	Value		Sheet		Date		First Issued		Price	
			Type	Printer	Code	Contents	or Printed	Pane		
<b>(h) Date code 15. Stamps in strip, matrix stripped, printing date on reverse. FSC Panel added. Printed by Walsall in gravure.</b>										
BSSL9	2nd Large	Bright blue	12A	W	15	PISSLW1, 3	28.4.15	–	13.50	
BSFL10	1st Large	Red	12A	W	15	PI5FLW2, 3	23.2.15	–	14.00	

## (B) Iridescent Overprint. Security Printed Backing Paper.

For images of security printed backing paper see section 5B, page ??

### De La Rue

**Gravure. Iridescent overprint. OFNP/SAN paper with Type 2 Security Printed Backing. ES Elliptical (E1) perf. 15 x 14. A2(B). Phosphor with blue fluor additive. Type 2 Security slits. Sheets of 50, in two panes of 25, separated by a vertical gutter.**

### Date Code 17

CC	Value		Backing Phos			First Issued		Price
			Code	Paper	Bands	or Printed	Source	
<b>(c) Date code 17. Gravure, sheet (no code) printings. Iridescent security overprint. Type 2 security printed backing paper in Large over Small (L/S) or Small over Large (S/L) orientation as indicated. Type 2 security slits.</b>								
PPI7SLD1	2nd Large	Deep bright blue	–	L/S	2B	11.4.17	cyl D1D1(D1)	2.55
PI7SLD2	2nd Large	Deep bright blue	–	S/L	2B	17.10.17	cyl D1D1(D1)	4.15
PI7FLD1	1st Large	Royal Mail red	–	L/S	2B	11.4.17	cyl D1D1(D1)	3.30
					2B (S17)		cyl D1D1(D1)	30.00
PI7FLD2	1st Large	Royal Mail red	–	S/L	2B	26.05.17	cyl D1D1(D1)	4.85

*Gutter pairs of sheet stamps are priced at twice the price of a single copy.*

### Walsall

**Gravure. Iridescent overprint. OFNP/SAN paper with Type 1 (2014 and 2015 printings or Type 2 (2016 onwards) Security Printed Backing. ES Elliptical (E1) perf. 15 x 14. A2(B). Phosphor with blue fluor additive. Type 2 Security slits. Sheet printings in sheets of 50, in two panes of 25, separated by a vertical gutter.**

## Date Code 15

CC	Value		Phos. Code Bands	First Issued or Printed	Source	Price
<b>(a) Date code 15. Gravure, business sheet (code B) or booklet (code F) printings. Iridescent security overprint. Type 1 security printed backing paper. Type 2 security slits.</b>						
PI5FLW4	1st Large	Royal Mail red	F 2B	6.2.16	4 (£3.80) SB1(24)	2.75
PI5FLW5	1st Large	Royal Mail red	B 2B 2B (12)	15.2.16	bus sheet Type 14 bus sheet Type 14	4.50 17.50

## Date Code 16

On 20th October 2016, Royal Mail introduced a rebrand of their postal products, changing the typeface on booklets and business sheet top panels to the Chevin font. Royal Mail also used the opportunity to revise the red colour used to print 1st and 1st Large stamps. They added a further 5% of black to the colour mix, bringing into line with that used on pillar boxes and delivery vans. The difference is both quite obvious and dramatic and is much deeper than previously seen. The actual makeup of the colour in the CMYK colour model became: C0 M100 Y95 K9. As the change was deliberate, from this date, 1st Large stamps are given the colour designation 'Royal Mail Red' and are treated as a new colour, not just a shade. Sheet printings in the new colour appeared in April 2017.

On initial printings of 2nd and 2nd Large values from these same sources the blue colour appeared to be appreciably deeper, but Royal Mail made no official announcement that this was an intentional change and the colours soon started to revert to the previous bright blue colour, so these are not treated in the same way, any colour variations simply becoming a new shade.

CC	Value		Phos. Code Bands	First Issued or Printed	Source	Price
<b>(b) Date code 16. Gravure, business sheet (code B) or booklet (code F) printings. Iridescent security overprint. Type 1 security printed backing paper. Type 2 security slits.</b>						
PI6SLW1	2nd Large	Bright blue	B 2B	29.4.16	bus sheet Type 14A	4.50
PI6SLW2	2nd Large	Bright blue	F 2B	7.16	4 (£3.00) SB2(15)	5.00
PI6SLW3	2nd Large	Deep bright blue	B 2B 2B (11)	20.10.16 2016	bus sheet Type 16 bus sheet Type 16	3.25 24.75
PI6SLW4	2nd Large	Deep bright blue	F 2B	20.10.16	4 (£3.00) SB2(16)	3.45
PI6SLW5	2nd Large	Deep bright blue, snowy print	F 2B	1.17	4 (£3.00) SB2(16)	20.00
PI6FLW1	1st Large	Red	B 2B	12.7.16	bus sheet Type 14A	3.25
PI6FLW2	1st Large	Red	F 2B	14.5.16	4 (£3.84) SB1(25)A	3.75
PI6FLW3	1st Large	Royal Mail red	B 2B 2B (S17)	20.10.16 20.10.16	bus sheet Type 16 bus sheet Type 16	3.55 27.50
PI6FLW4	1st Large	Royal Mail red	F 2B	20.10.16	4 (£3.84) SB1(27)	3.65

## Date Code 17

CC	Value		Backing Phos			First Issued		Price	
			Code	Paper	Bands	or Printed	Source		
<b>(c) Date code 17. Gravure, sheet (no code) business sheet (code B) or booklet (code F) printings. Iridescent security overprint. Type 2 security printed backing paper in Large over Small (L/S) or Small over Large (S/L) orientation as indicated. Type 2 security slits.</b>									
PI7SLW1	2nd Large	Deep bright blue	B	S/L	2B 2B (I1)		29.8.17	bus sheet Type 16A bus sheet Type 16A	3.65 13.75
PI7SLW2	2nd Large	Bright blue	F	L/S	2B		19.8.17	4 (£3.04) SB2(17)A	3.40
PI7SLW3	2nd Large	Deep bright blue	B	L/S	2B		6.6.17	bus sheet Type 16A	3.60
PI7FLW1	1st Large	Royal Mail red	B	L/S	2B 2B (S17)		8.17 8.17	bus sheet Type 16A bus sheet Type 16A	3.55 19.50
PI7FLW2	1st Large	Royal Mail red	F	S/L	2B		5.17	4 (£3.96) SB1(27)A	3.60
PI7FLW3	1st Large	Royal Mail red	F	L/S	2B		7.17	4 (£3.96) SB1(27)A	4.15
PI7FLW4	1st Large	Royal Mail red	B	S/L	2B		9.17	bus sheet Type 16A	4.85
PI7FLW5	1st Large	Royal Mail red, snowy print, weak iridescence	F	L/S	2B		2017	bus sheet Type 16A	25.00

## Date Code 18

CC	Value		Backing Phos			First Issued		Price	
			Code	Paper	Bands	Fluor	or Printed		Source
<b>(d) Date code 18. Gravure, sheet (no code) business sheet (code B) or booklet (code F) printings. Iridescent security overprint. Type 2 security printed backing paper in Large over Small (L/S) or Small over Large (S/L) orientation as indicated. Type 2 security slits.</b>									
PI8SLW1	2nd Large	Bright blue	F	L/S	2B		5.18	4 (£3.16) SB2(17)B	2.70
PI8SLW2	2nd Large	Bright blue	–	S/L	2B	Violet	12.9.18	cyl W1W1(W1)	2.75
PI8SLW3	2nd Large	Pale bright blue	–	S/L	2B 2B (S17)	Dull violet	30.7.18 30.7.18	cyl W1W1(W1) cyl W1W1(W1)	4.65 25.00
PI8SLW4	2nd Large	Deep bright blue	B	S/L	2B		25.4.18	bus sheet Type 16B	4.15
PI8SLW5	2nd Large	Deep dull bright blue	–	S/L	2B	Bright	29.10.18	cyl W1W1(W1)	4.65
PI8SLW6	2nd Large	Bright blue	F	S/L S/L	2B 2B (S16)		1.19 1.19	4 (£3.16) SB2(17)B 4 (£3.16) SB2(17)B	5.00 22.50
PI8SLW7	2nd Large	Deep bright blue	B	L/S	2B		29.10.18	bus sheet Type 16B	15.00
PI8FLW1	1st Large	Royal Mail red	–	S/L	2B		14.02.18	cyl W1W1(W1)	2.70
PI8FLW2	1st Large	Royal Mail red	F	L/S	2B 2B (S16)	Dull	4.18 4.18	4 (£4.04) SB1(27)B 4 (£4.04) SB1(27)B	3.05 19.25
PI8FLW3	1st Large	Royal Mail red	B	L/S	2B		5.18	bus sheet Type 16B	3.70
PI8FLW4	1st Large	Royal Mail red	F	S/L	2B		8.18	4 (£4.04) SB1(27)B	4.35

**6B : Improved Security Non Standard Machins & Definitives with Security Backing – Walsall**

CC	Value	Code	Backing Phos			First Issued		Source	Price
			Paper	Bands	Fluor	or Printed			
PI8FLW5	1st Large	Deep Royal Mail red –	S/L	2B	Dull violet	30.07.18	cyl W1W1(W1)	5.25	
PI8FLW6	1st Large	Pale Royal Mail red, pale Queen's head	B	S/L	2B	26.10.18	bus sheet Type 16B	5.20	
PI8FLW7	1st Large	Pale Royal Mail red –	S/L	2B	Bright	29.08.18	cyl W1W1(W1)	5.50	
PI8FLW8	1st Large	Royal Mail red	F	L/S	2B	Bright	12.18	4 (£4.04) SB1(27)B	5.00
					2B (S17)		12.18	4 (£4.04) SB1(27)B	19.25

*Gutter pairs of sheet stamps are priced at twice the price of a single copy.*

## Date Code 19

CC	Value	Code	Backing Phos			First Issued		Source	Price
			Paper	Bands	Fluor	or Printed			

**(e) Date code 19. Gravure, sheet (no code) business sheet (code B) or booklet (code F) printings. Iridescent security overprint. Type 2 security printed backing paper in Large over Small (L/S) or Small over Large (S/L) orientation as indicated. Type 2 security slits.**

PI9SLW1	2nd Large	Bright blue	–	S/L	2B	25.2.19	cyl W1W1(W1)	2.95
PI9SLW2	2nd Large	Pale bright blue	–	S/L	2B	18.4.19	cyl W1W1(W1)	5.10
PI9SLW3	2nd Large	Bright blue	F	S/L	2B (ISB/IIL)	6.19	4 (£3.32) SB2(17)C	3.30
PI9SLW4	2nd Large	Deep bright blue	B	L/S	2B	22.5.19	bus sheet Type 16C	3.85

CC	Value	Code	Backing Phos			First Issued		Source	Price
			Paper	Bands	Fluor	or Printed			
PI9SLW5	2nd Large	Bright blue	–	L/S	2B	Very bright	10.9.19	cyl W1W1(W1)	5.10
PI9SLW6	2nd Large	Bright blue	F	L/S	2B		11.19	4 (£3.32) SB2(17)C	5.25
					2B (ISB/IIL)		11.19	4 (£3.32) SB2(17)C	4.95
PI9SLW7	2nd Large	Deep bright blue	B	S/L	2B	Bright yellow	22.10.19	bus sheet Type 16C	6.90
					2B/IIR		22.10.19	bus sheet Type 16C	15.00
PI9FLW1	1st Large	Royal Mail red	–	S/L	2B		25.2.19	cyl W1W1(W1)	3.50
PI9FLW2	1st Large	Royal Mail red	–	L/S	2B (S16)		18.4.19	cyl W1W1(W1)	16.50
PI9FLW3	1st Large	Royal Mail red	F	L/S	2B		2.7.19	4 (£4.24) SB1(27)C	3.25
					2B/ISB		2.7.19	4 (£4.24) SB1(27)C	10.95
					2B (IIR/ISB)		2.7.19	4 (£4.24) SB1(27)C	12.05
PI9FLW4	1st Large	Deep Royal Mail red	–	L/S	2B (S16)(I1)		18.4.19	cyl W1W1(W1)	13.75
PI9FLW5	1st Large	Royal Mail red	B	S/L	2B		24.7.19	bus sheet Type 16C	3.85
PI9FLW6	1st Large	Royal Mail red	–	L/S	2B	Bright	26.11.19	cyl W1W1(W1)	4.65
PI9FLW7	1st Large	Royal Mail red	B	S/L	2B	Bright yellow	22.10.19	bus sheet Type 16C	7.50
					2B (I1)		22.10.19	bus sheet Type 16C	18.00
PI9FLW8	1st Large	Royal Mail red	B	L/S	2B		25.3.19	bus sheet Type 16C	0.00

*Gutter pairs of sheet stamps are priced at twice the price of a single copy.*

## Date Code 20

CC	Value		Backing Phos			First Issued		Source	Price
			Code	Paper	Bands	Fluor	or Printed		
P20SLW1	2nd Large	Bright blue	–	L/S	2B		1.7.20	cyl W1W1(W1)	3.35
					2B (S17)		1.7.20	cyl W1W1(W1)	15.00
P20SLW2	2nd Large	Deep bright blue	–	L/S	2B		20.8.20	cyl W1W1(W1)	3.75
P20SLW3	2nd Large	Bright Blue	B	L/S	2B		23.12.20	bus sheet Type 16D	4.00
P20SLW4	2nd Large	Bright blue	F	S/L	2B		19.9.20	4 (£3.52) SB2(17)C	?
P20SLW5	2nd Large	Bright Blue	B	S/L	2B		9.9.20	bus sheet Type 16D	?
P20FLW1	1st Large	Royal Mail red	–	L/S	2B		16.6.20	cyl W1W1(W1)	3.75
P20FLW2	1st Large	Royal Mail red	B	S/L	2B		22.10.20	bus sheet Type 16D	4.00
P20FLW3	1st Large	Royal Mail red	F	S/L	2B		17.8.20	4 (£4.60) SB1(27)D	3.25
						P20FLW3AB Additional 7mm phos band to right of centre		17.8.20	4 (\$.60) SB1(27)D
P20FLW4	1st Large	Pale Royal Mail red, pale Queen's head	–	L/S	2B		20.8.20	cyl W1W1(W1)	4.50
P20FLW5	1st Large	Royal Mail red	B	L/S	2B		23.9.20	bus sheet Type 16D	5.25

*Gutter pairs of sheet stamps are priced at twice the price of a single copy.*

## Business Sheet Top Panels

### Type 14



**Top Panel Types  
14 & 14A**  
– 2015-16 Walsall sheets  
**Matrix stripped**  
**containing PIP Large NVIs**  
**FSC accreditation panel,**  
**Text-phone dialing code 03456**  
**Type 1 Security printed**  
**backing paper**

CC No.	Value		Sheet Type	Date Printer	Backing Code	Back Paper	Contents	First Issued	Price
<b>(a) Date code 15. Stamps in strip, matrix stripped, printing date on reverse. FSC Panel added. Printed by Walsall in gravure. Type 1 Security backing paper.</b>									
BSFL11	1st Large	Red	14	W	15	1	PI5FLW5	15.2.16	25.00
<b>(b) Date code 16. Stamps in strip, matrix stripped, printing date on reverse. FSC Panel added. Printed by Walsall in gravure. Type 1 Security backing paper.</b>									
BSSL10	2nd Large	Bright blue	14A	W	16	1	PI6SLW1	29.4.16	20.00
BSFL12	1st Large	Red	14A	W	16	1	PI6FLW1	12.7.16	18.00

### Type 16

**Top Panel Types  
16, 16A, 16B, 16C & 16D**  
– 2016-20 Walsall sheets  
**Matrix stripped**  
**containing PIP Large NVIs**  
**Rebranded Chevin typeface**  
**Type 1 or 2 Security printed**  
**backing paper**



CC No.	Value		Sheet Type	Date Printer	Backing Code	Back Paper	Contents	First Issued	Price
<b>(c) Date code 16. Stamps in strip, matrix stripped, printing date on reverse. FSC Panel added. Printed by Walsall in gravure. Type 1 Security backing paper.</b>									
BSSL11	2nd Large	Deep bright blue	16	W	16	1	PI6SLW3	20.10.16	20.00
BSFL13	1st Large	Royal Mail red	16	W	16	1	PI6FLW3	20.10.16	22.50



CC No.	Value		Sheet		Date		Backing	Contents	First Issued or Printed	Price
			Type	Printer	Code	Paper				
<b>(d) Date code 17. Stamps in strip, matrix stripped, printing date on reverse. FSC Panel added. Printed by Walsall in gravure. Type 2 Security backing paper.</b>										
BSSL12	2nd Large	Deep bright blue	16A	W	17	S/L	P17SLW1	29.8.17	16.50	
						L/S	P17SLW3	6.6.17	15.00	
BSFL14	1st Large	Royal Mail red	16A	W	17	L/S	P17FLW1	8.17	18.00	
						S/L	P17FLW4	9.17	20.00	
<b>(e) Date code 18. Stamps in strip, matrix stripped, printing date on reverse. FSC Panel added. Printed by Walsall in gravure. Type 2 Security backing paper.</b>										
BSSL13	2nd Large	Deep bright blue	16B	W	18	S/L	P18SLW4	25.4.18	20.00	
						L/S	P18SLW7	29.10.18	–	
BSFL15	1st Large	Royal Mail red	16B	W	18	L/S	P18FLW3	5.18	25.00	
						S/L	P18FLW6	26.10.18	20.00	
<b>(f) Date code 19. Stamps in strip, matrix stripped, printing date on reverse. FSC Panel added. Printed by Walsall in gravure. Type 2 Security backing paper.</b>										
BSSL14	2nd Large	Deep bright blue	16C	W	19	S/L	P19SLW4	22.5.19	22.50	
						L/S	P19SLW7	22.10.19	–	
BSFL16	1st Large	Royal Mail red	16C	W	19	L/S	P19FLW5	24.7.19	20.00	
						S/L	P19FLW8	25.3.19	–	
<b>(g) Date code 20. Stamps in strip, matrix stripped, printing date on reverse. FSC Panel added. Printed by Walsall in gravure. Type 2 Security backing paper.</b>										
BSSL15	2nd Large	Deep bright blue	16D	W	20	L/S	P20SLW3	23.12.20	22.50	
						S/L	P20SLW5	22.10.19	–	
BSFL17	1st Large	Royal Mail red	16D	W	20	L/S	P20FLW2	22.10.20	20.00	
						L/S	P20FLW5	23.9.20	25.00	

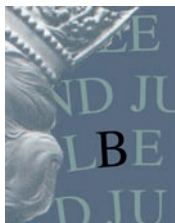
## (J) Diamond Jubilee Pricing In Proportion Machins with Improved Security Features



To mark the Queen's Diamond Jubilee in 2012, Royal Mail changed the colour of both 1st and 1st Large values to a grey-blue colour which they rather fancifully called Diamond Blue. In addition the iridescent overprint that adorns all 1st values in a wavy pattern was reworded, to read "DIAMOND JUBILEE" and covers the whole of the stamp background, avoiding the value and Queen's head. On previous improved security stamps, however, the iridescent overprint has been reconfigured to cover the Queen's head, but on these stamps the head remains unoverprinted. The typeface used for this iridescent overprint is also different – it is in a serified face, akin to Times New Roman.

The initial batch of small format 1st values were released on 26th February 2012 (for further details of these stamps, see Chapter 5B, page ??), but for reasons known only to Royal Mail, release of the 1st Large designs were delayed until 25th April. They come from three different sources – sheets, booklets of 4 and business sheets of 50 and a commemorative/definitive miniature sheet. In line with normal practice for definitives, stamps from these different sources, apart from sheet stamps, bear a source code letter matching those previously used, hidden in the iridescent overprint. However, as these stamps were only available during the Jubilee year, the addition of a hidden date code was deemed superfluous. As before we are illustrating the location of these hidden codes within the overprint.

In all other respects the sheet, booklet and business sheet stamps are identical in specification to the then current Improved security stamps from those sources.



**Code B**  
ex Business sheets of 50



**Code F**  
ex booklets of 4

## De La Rue

**Gravure. OFNP/SAN. A2(B) Phosphor with blue fluor additive. No fluor in paper coating. Kiss die-cut to simulate perf. 15 x 14 (E1) .  
Translucent backing paper, rouletted on edges to facilitate separation.**

CC	Value		Phos. Bands	First Issued or Printed	Source	Price Single	Gutter
<b>(a) No Date code. Gravure, sheet (no code) printings. Iridescent security overprint. Type 2 security slits.</b>							
PDJFLD1	1st Large	Grey-blue	2B	25.4.12	cyl D1D1(D1)	2.25	4.50

## Walsall

**Gravure. OFNP/SAN. A2(B) Phosphor with blue fluor additive.  
No fluor in paper coating. Kiss die-cut to simulate perf. 15 x 14 (E1) .  
Translucent (business sheets) or opaque (booklets) backing paper, rouletted on edges to facilitate separation.**

CC	Value		Code	Phos. Bands	First Issued or Printed	Source	Price
<b>(d) No Date code. Gravure, business sheet (code B) or booklet (code F) printings. Iridescent security overprint. Type 2 security slits.</b>							
PDJFLW1	1st Large	Grey-blue	B	2B	25.4.12	bus sheet Type 10	2.50
				2B (S17)		bus sheet Type 10	13.75
				2B (S17)(I1)		bus sheet Type 10	16.50
				2B (I1)		bus sheet Type 10	19.25
				2B (I2)		bus sheet Type 10	24.75
				2B/III		bus sheet Type 10	10.45
PDJFLW2	1st Large	Grey-blue	F	2B	25.4.12	4 (£3.60) SP150	2.30
				2B/ISB		SP150	21.45

## Business Sheet Top Panels



**Top Panel Type 10  
– 2012 Walsall sheets  
Matrix stripped  
containing Diamond Jubilee  
1st Large  
FSC accreditation panel**

The top panels of Diamond Jubilee Business sheets matched the current Type 10A versions for 2nd Large and later 1st Large red versions with the the added FSC accreditation panel. The top section was printed in the Diamond Blue colour, in keeping with other values. However, it did differ in that it bore an iridescent overlay bearing the words “DIAMOND JUBILEE” repeated across the entire design in a wavy pattern, similar to that used on the background of the stamps themselves, albeit in a much larger typesize.

## Type 10

<i>CC No.</i>	<i>Value</i>	<i>Sheet Type</i>	<i>Printer</i>	<i>Contents</i>	<i>First Issued or Printed</i>	<i>Pane</i>	<i>Price</i>
<b>(d) No Date code. Stamps in strip, matrix stripped, printing date on reverse. FSC Panel added. Printed by Walsall in gravure.</b>							
BSFL5	1st Large	Grey-blue	10	W	PDJFLW1	25.4.12	SP151 15.00

## (K) Signed For Machins with Improved Security Features

### Recorded Signed For Issues



In furtherance of trying to provide an NVI stamp for the base weight rate of all their services, in November 2009 introduced two new rates to prepay the first step Recorded Delivery rate for standard and large letters (at the time 39p or 61p postage and 75p Recorded fee). Unlike other NVIs they were only valid on Recorded letters but higher weight rates could be made up by the addition of further postage.

The stamps feature the standard Machin NVI 1st and PIP Large 1st stamps, but printed in the then former flame colour, and have a yellow bar running down the left hand edge in which is written “RECORDED SIGNED FOR” in the flame colour of the rest of the stamp. Royal Mail had just rebranded their Recorded Delivery service as ‘Recorded Signed For’ in an attempt to give the general public a better idea of what the service actually provided, an uninsured service that would need to be signed for by the addressee on receipt to prove it had been delivered. To accommodate the service inscription, the stamps are both 4mm wider than a conventional Machin or PIP Large value – the 1st measuring 24mm square and the Large 1st 34 x 24mm.

The stamps otherwise show the features you would expect on an Improved Security

issue, having the standard Royal Mail iridescent overprint but without any source code letters as these were restricted to a sheet source. Initial issues also bore no date codes, as was the case with all 2009 issues, but reprints from 2010 onwards bore the date code in the same format and position as their contemporary sheet definitives. They bear two side phosphor bands measuring approximately 9mm in total width which contain a blue fluor additive. They have the expected pair of security slits, which are the type 2 versions, the first occasion that De La Rue used this slit on sheet issues.

The stamps are self-adhesive on opaque, matrix stripped backing paper which is rouletted between to facilitate removal of single stamps or blocks from the sheet. They are printed in double pane sheets of 50, separated by a horizontal gutter into two panes of 25. Sheets bear all the familiar sheet markings, including a colour name in the left selvedge, cylinder numbers and pane designation boxes at the lower-left, an inkjet printing date and sheet serial number at the lower-right and a barcode and Royal Mail's value code at the top-right.

At the time of their release it was something of a surprise as all Recorded Mail had to be posted over the Post Office counter where staff are encouraged to create a white Horizon label for such specialist services (and are given a financial incentive to do so), so the purpose of a stamp for the same use seemed somewhat unclear. However, it has subsequently become more obvious, particular with the rise of internet auction sites such as E-bay that postal users sending items of low value also wanted stamps to take away so they could prepare packages in advance, minimising their time in a Post Office queue. They also found use in other Royal Mail outlets, such as BFPOs and enquiry offices, which could accept Signed For mail but are not equipped with the Post Office's Horizon computerised system.

## SIGNED FOR NVI VALUES AT POSTAL RATE CHANGES

(Dates given in bracket are those of initial availability)

<i>Effective</i>	<i>1st</i>	<i>1st Large</i>
	(17.11.09)	(17.11.09)
6.4.09	£1.14	£1.36
6.4.10	£1.15	£1.40
4.4.11	£1.23	£1.52
30.4.12	£1.55	£1.85
2.4.13	£1.70	£2.00
31.3.14	£1.72	£2.03
30.3.15	£1.73	£2.05
29.3.16	£1.74	£2.06
27.3.17	£1.75	£2.08
26.3.18	£1.77	£2.11
25.3.19	£1.90	£2.26
23.3.20	£2.06	£2.45
1.1.21	£2.25	£2.69

# Unprinted Backing Paper

## De La Rue

Gravure. OFNP/SAN. A2(B) Phosphor with blue fluor additive. No fluor in paper coating. Kiss die-cut to simulate perf. 15 x 14 (E1) .

Translucent backing paper, rouletted on edges to facilitate separation.

Printed in sheets of 50 with a vertical gutter between panes.

## No Date Code

CC	Value	Phos. Bands	First Issued or Printed	Source	Price	
					Single	Gutter
<b>(a) No date code. Gravure, sheet printings. Iridescent security overprint. Type 2 security slits.</b>						
SFIFD1	1st	Flame & yellow	2B	17.11.09	cyl D1D1D1(D1)	3.50 7.00
SFIFLD1	1st Large	Flame & yellow	2B	17.11.09	cyl D1D1D1(D1)	3.75 7.50

## 10 Date Code

CC	Value	Phos. Bands	First Issued or Printed	Source	Price		
					Single	Gutter	
<b>(b) Date code 10. Gravure, sheet printings. Iridescent security overprint. Type 2 security slits.</b>							
SF10FD1	1st	Flame & yellow	2B	11.4.11	cyl D1D1D1(D1)	8.50	17.00
			2B (S17)	11.4.11	cyl D1D1D1(D1)	17.50	
SF10FLD1	1st Large	Flame & yellow	2B	11.4.11	cyl D1D1D1(D1)	14.50	29.00

## Royal Mail Signed For Issues



By the time they next needed a reprint for their Signed For values, Royal Mail had realised that there was very little public awareness of the service and therefore decided a relaunch was needed to enhance consumer knowledge of the product and what it could be used for – a tracked but not guaranteed delivery offering. To achieve this a small rebrand was decided on, dropping the word ‘Recorded’ and adding in ‘Royal Mail’ in its place.

To tie in with this Royal Mail revised the inscription on the stamps, and to make sure

they were used, redressed the balance of the financial incentive, now tipping it in favour of these special stamps rather than Horizon labels. The new stamps have revised wording in the same yellow bar with “ROYAL MAIL” replacing “RECORDED”. The stamps are identical in size and colour to the previous versions.

Their issue coincided with the 2013 tariff values, 27th March and were the first to be printed by De La Rue in their Gateshead plant.

### 13 Date Code

CC	Value	Phos. Bands	First Issued or Printed	Source	Price	
					Single	Gutter
<b>(a) Date code 13. Gravure, sheet printings. Iridescent security overprint. Type 2 security slits.</b>						
SF13FD1	1st	Flame & yellow	2B	27.3.13	cyl D1D1D1(D1)	3.50 7.00
SF13FLD1	1st Large	Flame & yellow	2B	27.3.13	cyl D1D1D1(D1)	4.50 9.00

### 15 Date Code

CC	Value	Phos. Bands	First Issued or Printed	Source	Price	
					Single	Gutter
<b>(b) Date code 15. Gravure, sheet printings. Iridescent security overprint. Type 2 security slits.</b>						
SF15FD1	1st	Flame & yellow	2B	6.3.15	cyl D1D1D1(D1)	5.00 10.00
SF15FD2	1st	Flame & yellow, dull fluor	2B	13.11.15	cyl D1D1D1(D1)	7.50 15.00
SF15FLD1	1st Large	Flame & yellow	2B	6.3.15	cyl D1D1D1(D1)	9.50 19.00

### 16 Date Code

CC	Value	Phos. Bands	First Issued or Printed	Source	Price	
					Single	Gutter
<b>(c) Date code 16. Gravure, sheet printings. Iridescent security overprint. Type 2 security slits.</b>						
SF16FD1	1st	Flame & yellow	2B	12.10.16	cyl D1D1D1(D1)	5.00 10.00
SF16FLD1	1st Large	Flame & yellow	2B	6.4.16	cyl D1D1D1(D1)	6.00 12.00

### 17 Date Code

CC	Value	Phos. Bands	First Issued or Printed	Source	Price	
					Single	Gutter
<b>(d) Date code 17. Gravure, sheet printings. Iridescent security overprint. Type 2 security slits.</b>						
SF17FLD1	1st Large	Flame & yellow	2B	11.4.17	cyl D1D1D1(D1)	4.75 9.50

# Security Backing Paper

## 17 Date Code

CC	Value		Phos. Bands	Backing Paper	First Issued or Printed	Source	Price	
							Single	Gutter

**(e) Date code 17. Gravure, sheet printings. Iridescent security overprint. Type 2 security printed backing paper in Large over Small (L/S) or Small over Large (S/L) orientation as indicated. Type 2 security slits.**

SF17FD1	1st	Flame & yellow	2B	L/S	7.7.17	cyl D1D1D1(D1)	4.75	9.50
SF17FD2	1st	Flame & yellow	2B	S/L	31.5.17	cyl D1D1D1(D1)	5.25	10.50

## Walsall

**Gravure. Iridescent overprint. OFNP/SAN paper with Type 2 Security Printed Backing. ES Elliptical (E1) perf. 15 x 14. A2(B). Phosphor with blue fluor additive. Type 2 Security slits. Sheet printings in sheets of 50, in two panes of 25, separated by a vertical gutter.**

## 18 Date Code

CC	Value		Phos. Bands	Backing Paper	First Issued or Printed	Source	Price	
							Single	Gutter

**(a) Date code 18. Gravure, sheet printings. Iridescent security overprint. Type 2 security printed backing paper in Large over Small (L/S) or Small over Large (S/L) orientation as indicated. Type 2 security slits.**

SF18FLW1	1st Large	Flame & yellow	2B	S/L	4.12.18	cyl W1W1W1(W1)	5.00	10.00
----------	-----------	----------------	----	-----	---------	----------------	------	-------

## 19 Date Code

CC	Value		Phos. Bands	Backing Paper	First Issued or Printed	Source	Price	
							Single	Gutter

**(b) Date code 19. Gravure, sheet printings. Iridescent security overprint. Type 2 security printed backing paper in Large over Small (L/S) or Small over Large (S/L) orientation as indicated. Type 2 security slits.**

SF19FW1	1st	Flame & yellow	2B	S/L	21.1.20	cyl W1W1W1(W1)	4.25	8.50
---------	-----	----------------	----	-----	---------	----------------	------	------



## 20 Date Code

<i>CC</i>	<i>Value</i>	<i>Phos. Bands</i>	<i>Backing Paper</i>	<i>First Issued or Printed</i>	<i>Source</i>	<i>Price</i>	
						<i>Single</i>	<i>Gutter</i>

**(c) Date code 20. Gravure, sheet printings. Iridescent security overprint. Type 2 security printed backing paper in Large over Small (L/S) or Small over Large (S/L) orientation as indicated. Type 2 security slits.**

<b>SF20FW1</b>	<b>1st</b>	Flame & yellow	2B	S/L	21.9.20	cyl W1W1W1(W1)	4.25	8.50
<b>SF20FLW1</b>	<b>1st Large</b>	Flame & yellow	2B	L/S	4.5.20	cyl W1W1W1(W1)	4.25	8.50